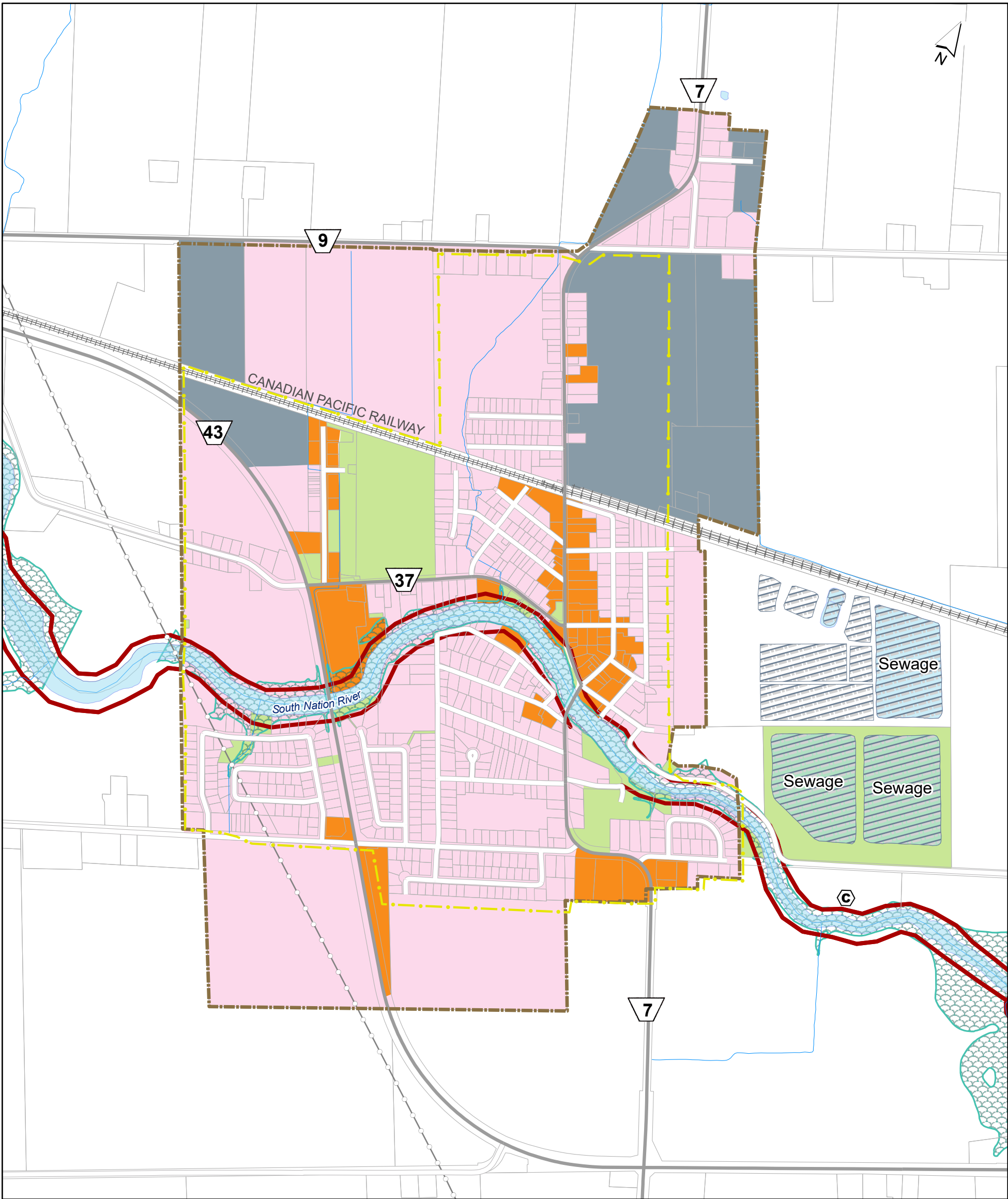




# SCHEDULE A1b

## Chesterville




### LEGEND



#### Boundaries (Land Use Designation)

-  Urban Settlement Area
-  Urban Service Limit

#### Settlement Areas (Land Use Designation)

-  Residential District
-  Commercial District
-  Employment District
-  Major Open Space


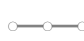
#### Environmental Protection Lands (Constraint Overlay)

-  Regulatory Floodline
-  Unstable Slope

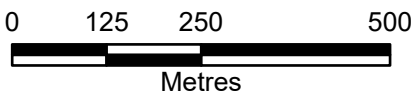
#### MECP Identified Closed Waste Site (Approximate Location):

-  Closed Waste Site

#### Infrastructure

-  Sewage Lagoon
-  Oil or Gas Pipeline

**1:10,000**



Produced by:  
The United Counties of Stormont, Dundas and Glengarry, Transportation Services.  
Contains information licensed under the Open Government License - Ontario.  
Parcels from Teranet. Not a plan of survey.  
© April 7, 2025