



“Improving Rural Education in Stormont, Dundas and Glengarry”

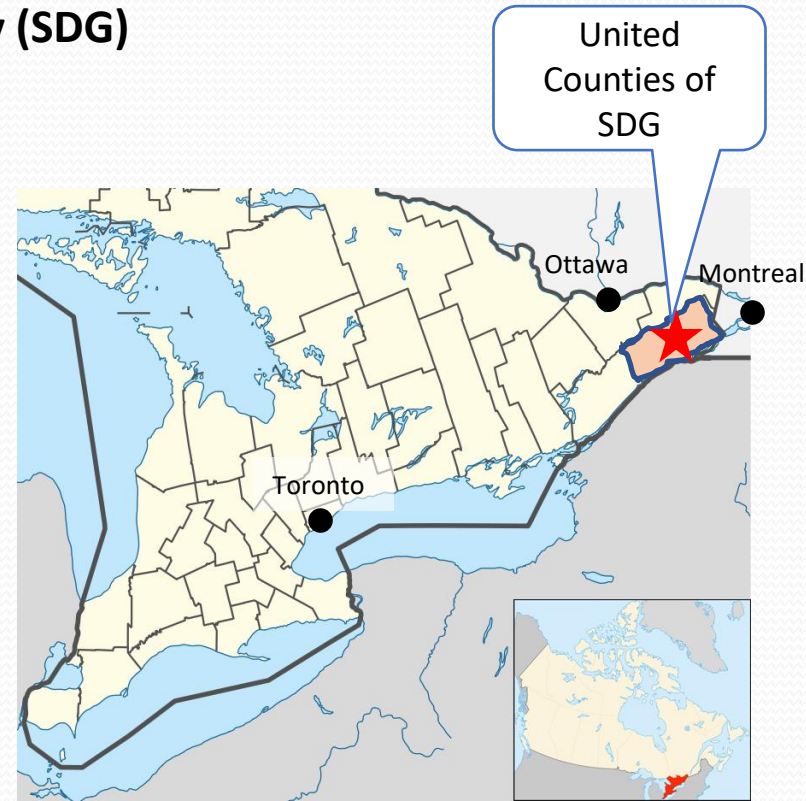
SDG Rural Education Symposium

February 3, 2022

Who are we?

United Counties of Stormont, Dundas & Glengarry (SDG)

- Six (6) local municipalities
Population: ~66k (does not include City of Cornwall ~45k)
- Along busiest transport corridor in Canada
- Primarily rural and agricultural
Over 1500 farm families
- Rich in heritage – *Where Ontario Began*
 - Franco-Ontarian
 - Scottish Highlanders
 - United Empire Loyalist
- All Four (4) Publicly Funded Schools Systems



Halfway between Montreal and Ottawa

How did we get here ?



Kirsten Gardner
Deputy Mayor
Municipality of South Dundas



Stephanie Jaworski
Deputy Mayor
Township of South Glengarry



How did we get here ?

- **2016-2017 Pupil Accommodation Reviews across Ontario & SDG**
- **2019 SDG County Council Strategic Priority 2 of 5:**
 - Rural Schools – Educating Children in their Own Communities

While education is not within the purview of municipal government in Ontario, Council believes that the County and its constituent local municipalities have a significant and vital role to play in ensuring that our children are educated as close to home as possible. School closures not only have devastating impacts on children, but entire communities. Further, schools are the backbone of many of our communities. Smaller, rural schools provide a safe, welcoming place in which to educate children.

- **2017-2021 Nine (9) Counties Delegations to Ministry of Education**
- **2021 Report “Improving Rural Education in Stormont, Dundas and Glengarry”, by Horizon Educational Consultants**



Ten Focus Areas

For proposed solutions and recommendations to government

1. **Competition for students**
2. **Schools as community assets**
3. **French Immersion programming**
4. **Transportation**
5. **Secondary School Specialized Programming**
6. **Internet access and technology**
7. **Daycare availability**
8. **Transparency and Public Service**
9. **Public Engagement**
10. **Ontario Student Bill of Rights**

Full report available on Counties website:

<https://www.sdgcounties.ca/sites/default/files/2021-12/Improving%20Rural%20Education%20Report.pdf>



A Tale of Three Counties

Three Case Studies

North Glengarry

Pop. ~10,000 (incl. 1,535 5-19 yrs. old)*

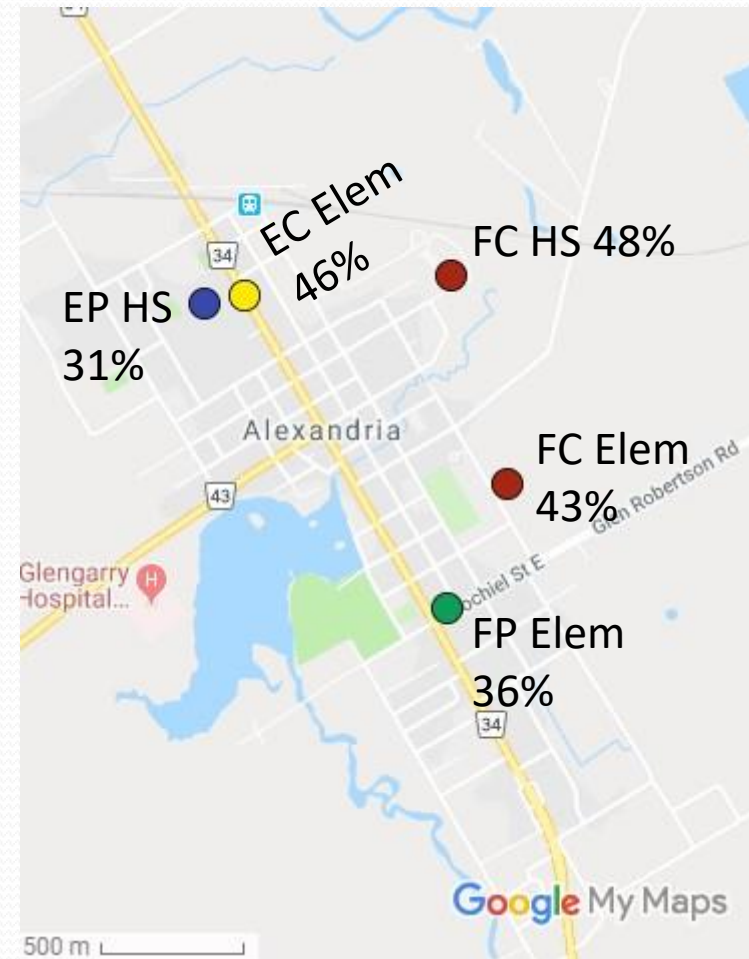
Alexandria – largest pop. centre ~2,800

Alexandria has 5 schools, **all < 49% utilization:**

- 980 Total students in schools in Alexandria**
- 2551 Pupil Spaces in Alexandria**

EP HS & FC HS shared one building until 2005, when FC HS was built at a cost of 10.2M\$

EP HS was the only school in Alexandria that was part of a PAR in 2016-2017.



*2016 Census Data

** Most recent of 2019-2020 or 2020-21 school data

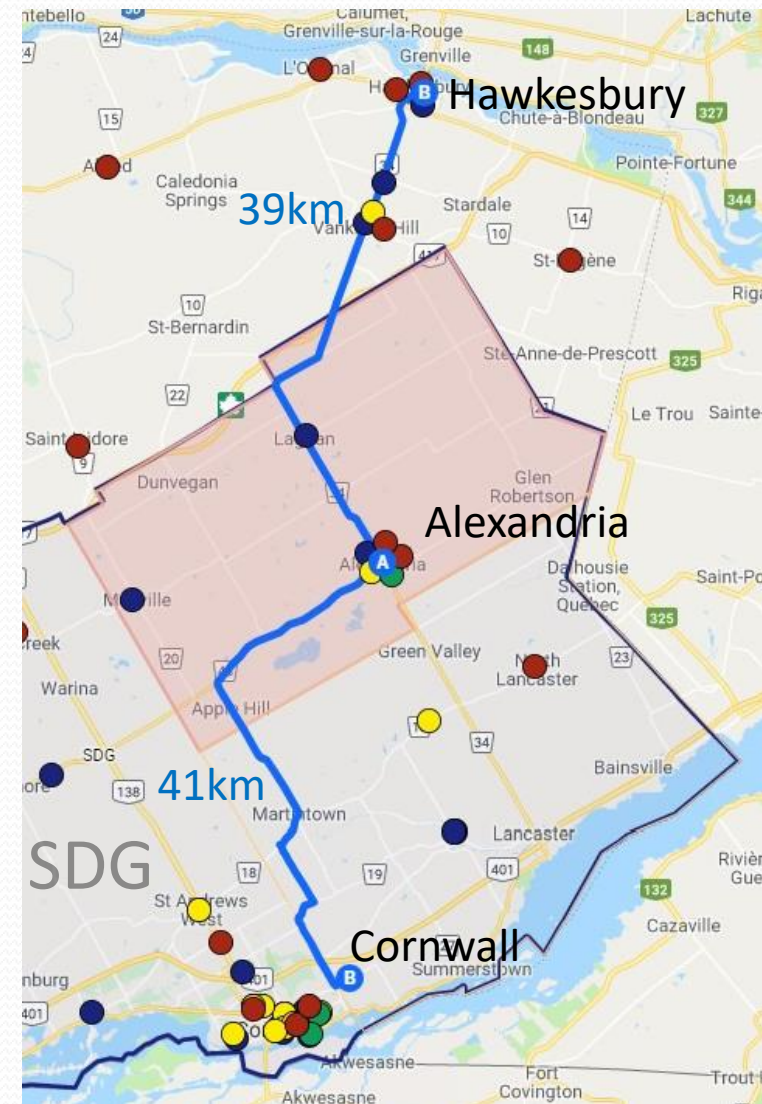
North Glengarry

1,535 5-19 yrs. old in North Glengarry*

1,250 total students in schools in North Glengarry**

Where are those approximately 300 students not educated in NG going?

- In SDG, each school board uses separate busses
 - Minimum of 4 busses travel on each rural road
- Students in Alexandria choosing English Catholic HS are bused 41km+ to the outskirts of Cornwall
- Students in Alexandria choosing French Public HS are bused 39km+ to Hawkesbury



**2016 Census Data*

*** Most recent of 2019-20 or 2020-21 school data*

North Glengarry



Glengarry County weekly newspaper. All school registration related clippings over the period of January 4 2018 to February 7 2018.

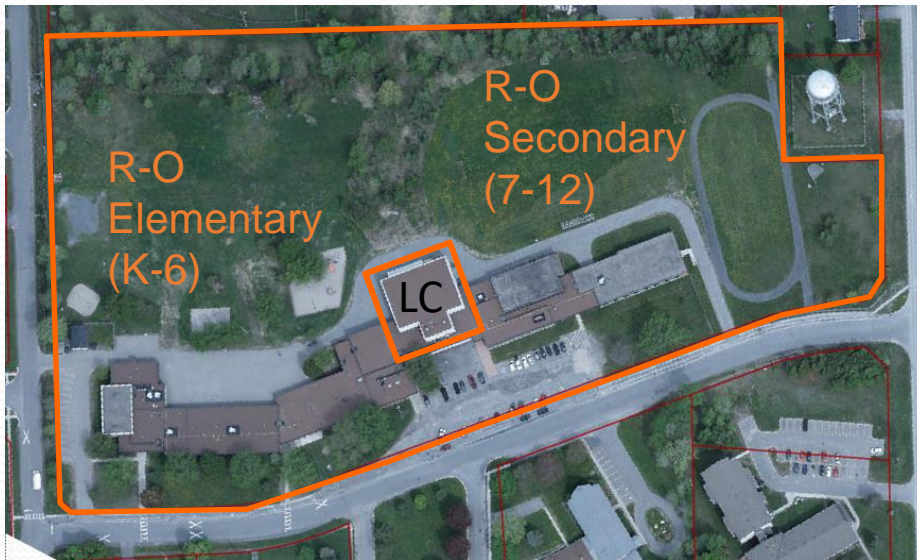
Manila letter size folder for scale.

South Stormont – a cautionary tale

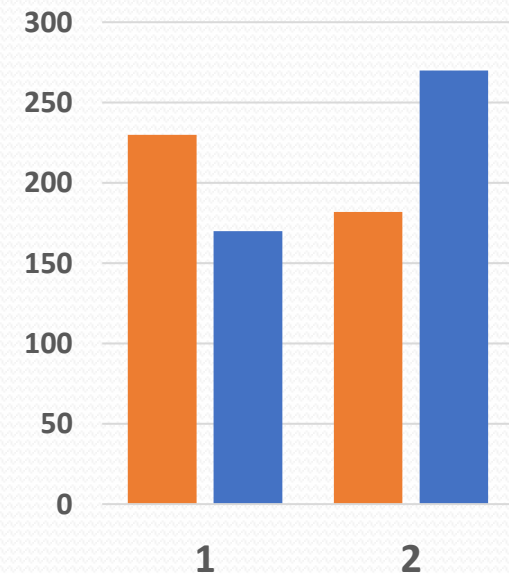
In SDG, French Immersion is a key pillar to school sustainability

South Stormont has two English Public Elem Schools

- LPS designated FI in mid 2000s
- R-O Elementary was designated Core English



Enrolment



Series1 Series2

South Stormont – schools as community assets

Pop. ~14,000 - Largest in SDG

- 0.8% annual growth rate, 2011-2016

- 437 residential permits 2017-2021

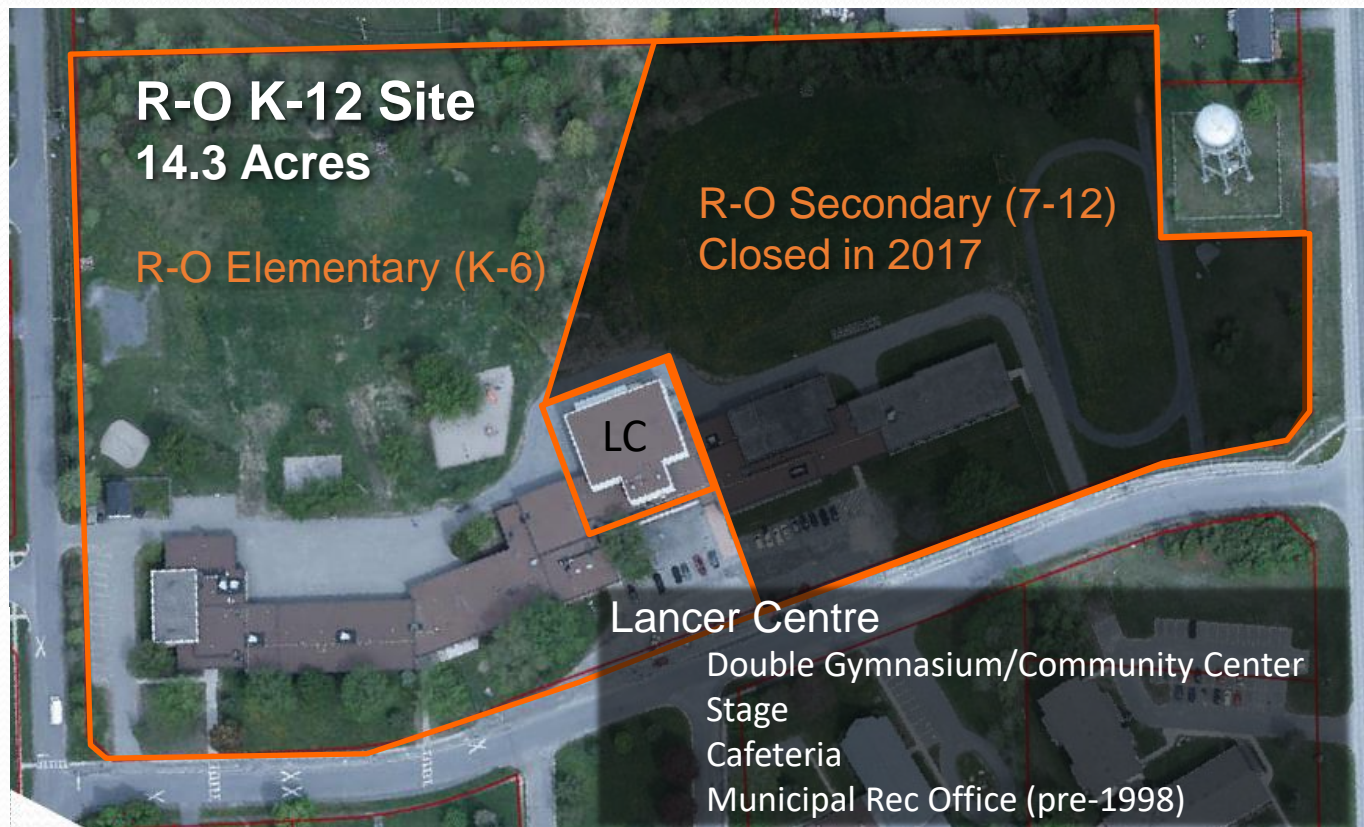
- Only muni. in SDG without a high school

- No children walk to secondary school in SS

- Community/Township funded 50% of 1.6M **Lancer Centre**

- Limited other public spaces in Ingleside

- Barriers to access Lancer Centre today



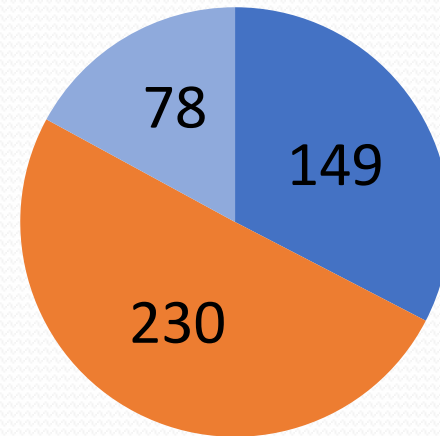


South Dundas

pop. ~11,000

South Dundas has 2 English Public Schools

- MPS offers Core English
- IPS offers French Immersion



■ 1 ■ 2 ■ 3

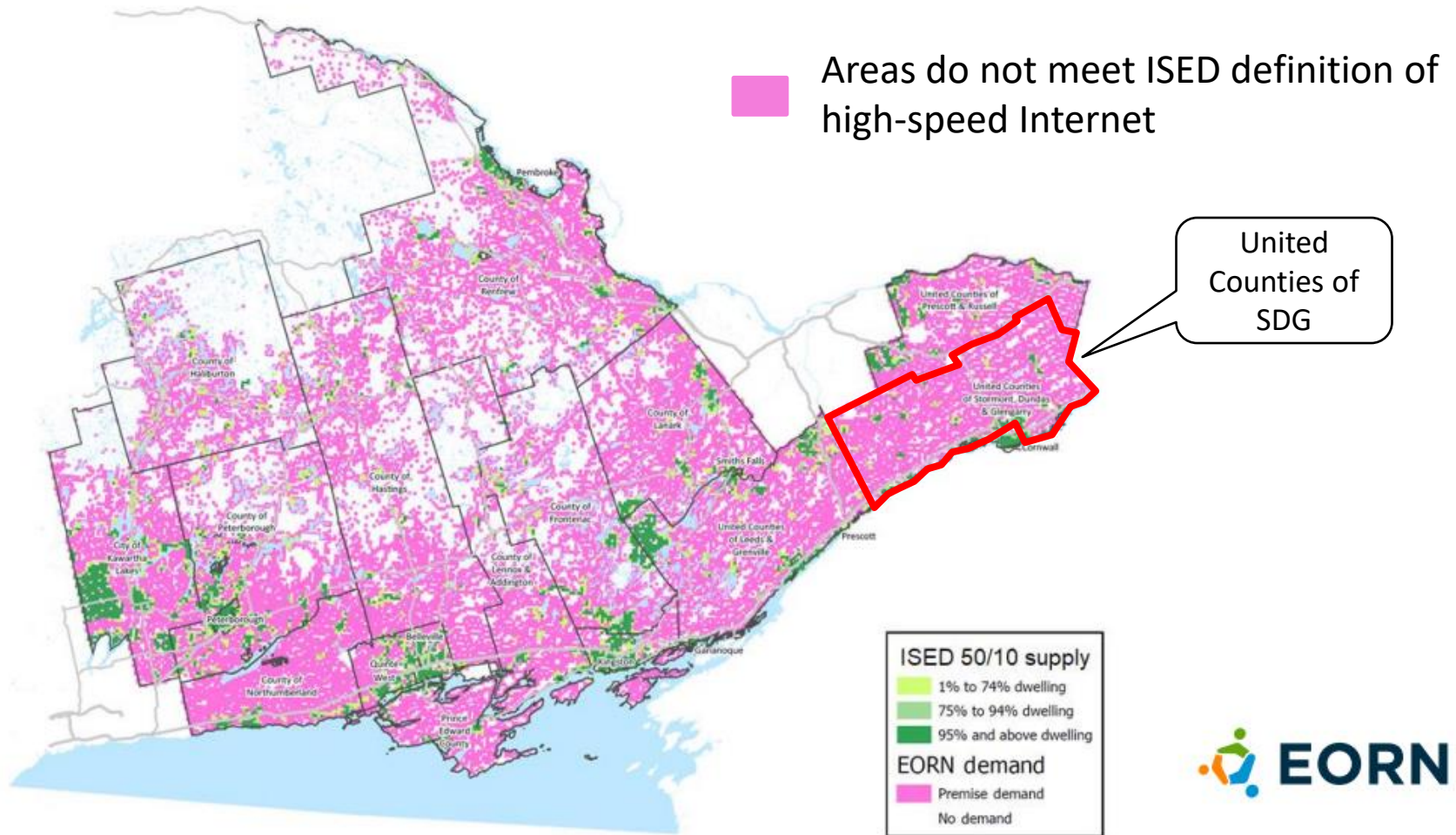
MPS Daycare

- 4 classrooms at MPS are dedicated to daycare
- Reversible daycare space counted as empty school space

High School Impacts

- The health of elementary schools directly impacts the health of high school

SDG – Substandard Internet





Ten Focus Areas

For proposed solutions and recommendations to government

1. **Competition for students**
2. **Schools as community assets**
3. **French Immersion programming**
4. **Transportation**
5. **Secondary School Specialized Programming**
6. **Internet access and technology**
7. **Daycare availability**
8. **Transparency and Public Service**
9. **Public Engagement**
10. **Ontario Student Bill of Rights**

Full report available on Counties website:

<https://www.sdgcounties.ca/sites/default/files/2021-12/Improving%20Rural%20Education%20Report.pdf>

Questions?

