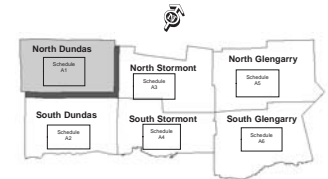




# LAND USE SCHEDULE A1

## Township of North Dundas

KEY PLAN



LEGEND

### Boundaries (Land Use Designation)

- Urban Settlement Area
- Rural Settlement Area
- Urban Service Limit

### Settlement Areas (Land Use Designation)

- Residential District
- Commercial District
- Employment District
- Rural District
- Airport District
- Salvage Yard District
- Waste Disposal District
- Special Land Use District (See Table 9.1.1 of the OP Text)

### Natural Heritage Features & Areas (Land Use Designation)

- Provincially Significant Wetland (PSW)
- Crown Land

### Resource Lands (Land Use Designation)

- Agricultural Resource Lands
- Extractive Resource Lands (Mineral Aggregate Reserve)
- Extractive Resource Lands (Licensed Pit & Quarry)

### Transportation and Infrastructure

- Provincial Highway
- County Road
- Township Road
- Road Allowance
- Rail Line
- Oil or Gas Pipeline
- Electric Power Transmission Line
- Township Boundary
- Water Ways
- Airport
- Communal Well
- Sewage Lagoon
- Hospital

### MOECC Identified Closed Waste Site (Approximate Location):

- C Closed Waste Site

1:50,000

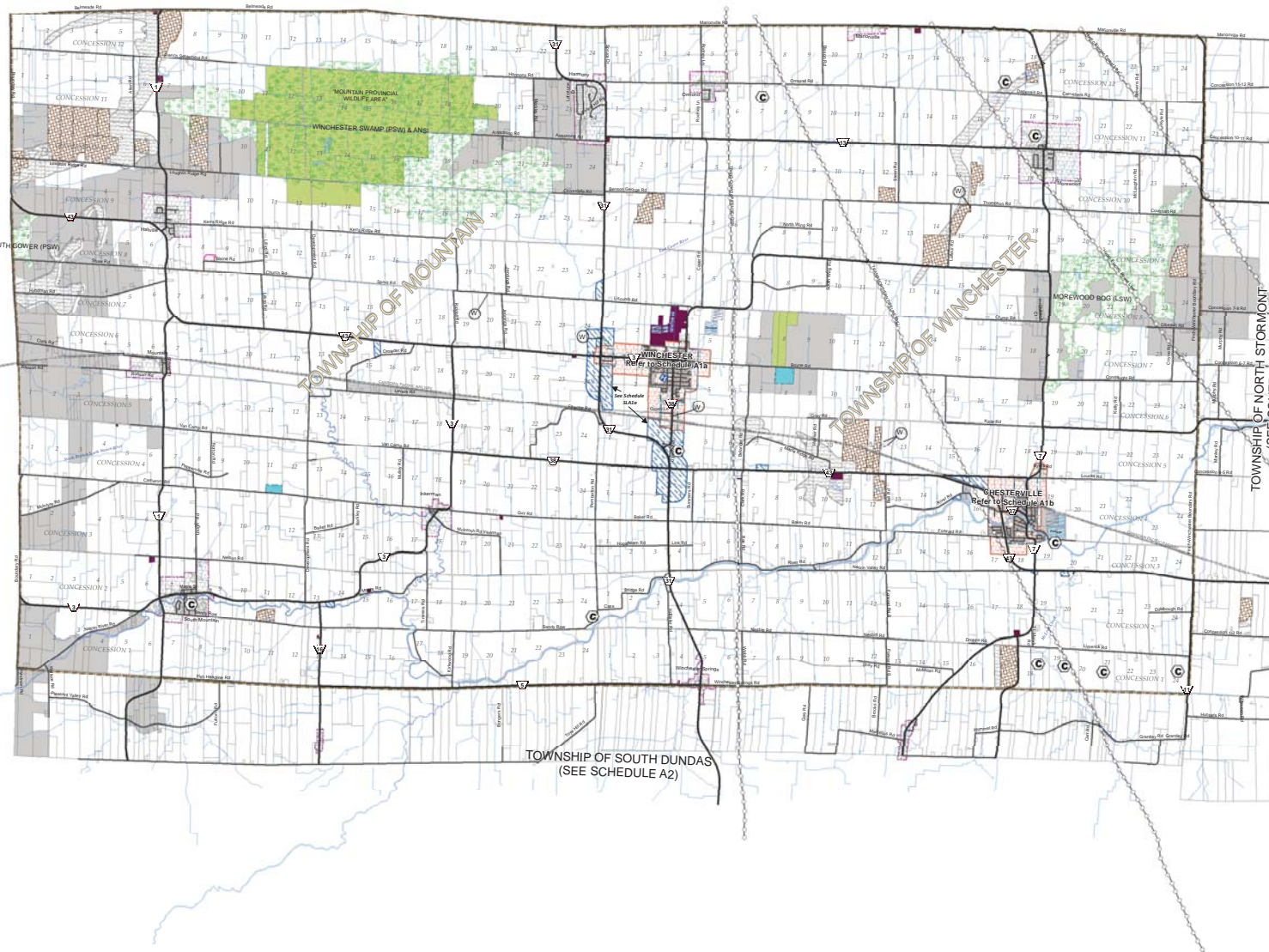


Produced by the United Counties of Stormont, Dundas and Glengarry, Transportation and Planning Services with Data supplied under Licence by Members of the Ontario Geospatial Data Exchange  
© November 17, 2015

CITY OF OTTAWA

UNITED COUNTIES OF PRESCOTT & RUSSELL  
TOWNSHIP OF RUSSELL

UNITED COUNTIES OF LEEDS & GRENVILLE  
TOWNSHIP OF NORTH GRENVILLE



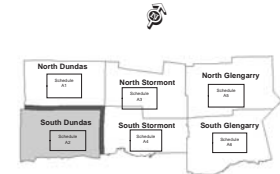
As updated by MMA, December 21, 2017



# LAND USE SCHEDULE A2

## Municipality of South Dundas

KEY PLAN



LEGEND

### Boundaries (Land Use Designation)

- Urban Settlement Area
- Rural Settlement Area
- Urban Service Limit

### Settlement Areas (Land Use Designation)

- Residential District
- Commercial District
- Employment District
- Rural District
- Airport District
- Salvage Yard District
- Waste Disposal District
- Special Land Use Districts (See Table 9.1.3 in OP Text)

### Natural Heritage Features & Areas (Land Use Designation)

- Provincially Significant Wetland (PSW)
- Crown Land

### Resource Lands (Land Use Designation)

- Agricultural Resource Lands
- Extractive Resource Lands (Mineral Aggregate Reserve)
- Extractive Resource Lands (Licensed Pit & Quarry)

### Transportation and Infrastructure

- Provincial Highway
- County Road
- Township Road
- Road Allowance
- Rail Line
- Oil or Gas Pipeline
- Electric Power Transmission Line
- Township Boundary
- Water Ways
- Airport
- Communal Well
- Sewage Lagoon
- Hospital

### MOECC Identified Closed Waste Site (Approximate Location):

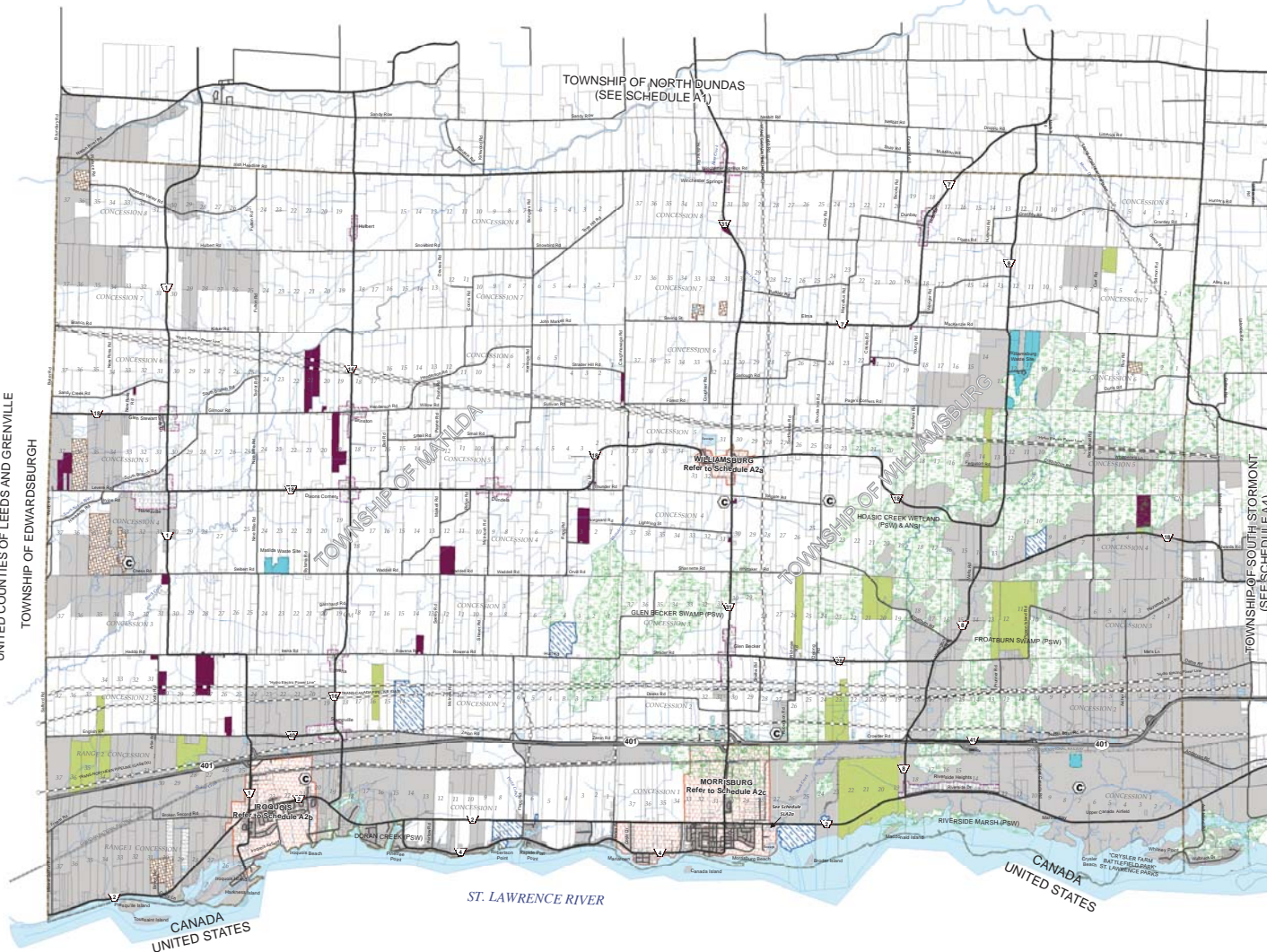
- C Closed Waste Site

1:50,000



Produced by the United Counties of Stormont, Dundas and Glengary, Transportation and Planning Services with data supplied under Licence by Members of the Ontario Geospatial Data Exchange  
© November 17, 2015

UNITED COUNTIES OF LEEDS AND GRENVILLE  
TOWNSHIP OF EDWARDSBURGH



As updated by MMA, December 21, 2017

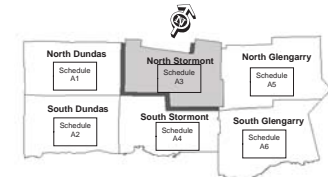




# LAND USE SCHEDULE A3

Township of  
North Stormont

## KEY PLAN



## LEGEND

### Boundaries (Land Use Designation)

- Urban Settlement Area
- Rural Settlement Area
- Urban Service Limit

### Settlement Areas (Land Use Designation)

- Residential District
- Commercial District
- Employment District
- Rural District
- Airport District
- Salvage Yard District
- Waste Disposal District
- Special Land Use Districts (See Table 9.1.2 in the OP Text)

### Natural Heritage Features & Areas (Land Use Designation)

- Provincially Significant Wetland (PSW)
- Crown Land

### Resource Lands (Land Use Designation)

- Agricultural Resource Lands
- Extractive Resource Lands (Mineral Aggregate Reserve)
- Extractive Resource Lands (Licensed Pit & Quarry)

### Transportation and Infrastructure

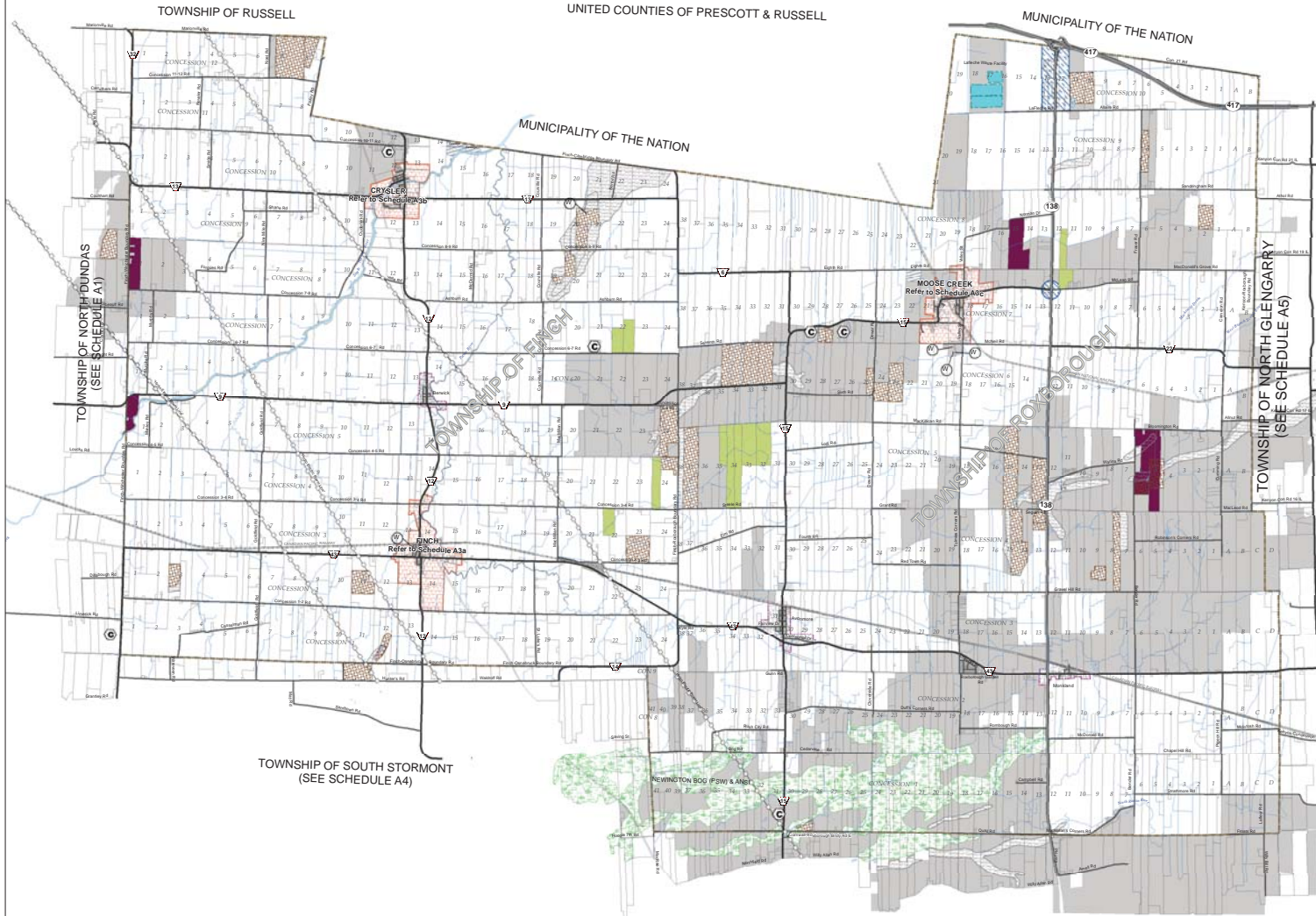
- Provincial Highway
- County Road
- Township Road
- Road Allowance
- Rail Line
- Oil or Gas Pipeline
- Electric Power Transmission Line
- Township Boundary
- Water Ways
- Airport
- Communal Well
- Sewage Lagoon
- Hospital

### MOECC Identified Closed Waste Site (Approximate Location):

- C Closed Waste Site



Produced by the United Counties of Stormont, Dundas and Glengarry, Transportation and Planning Services with data supplied under License by Members of the Ontario Geospatial Data Exchange  
© November 17, 2015

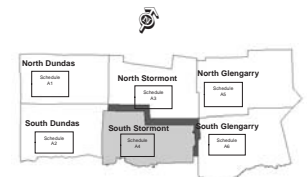




## LAND USE SCHEDULE A4

Township of  
South Stormont

KEY PLAN



LEGEND

### Boundaries (Land Use Designation)

- Urban Settlement Area
- Rural Settlement Area
- Urban Service Limit

### Settlement Areas (Land Use Designation)

- Residential District
- Commercial District
- Employment District
- Rural District
- Airport District
- Salvage Yard District
- Waste Disposal District
- Special Land Use Districts (See Table 9.1.4 in OP Text)

### Natural Heritage Features & Areas (Land Use Designation)

- Provincially Significant Wetland (PSW)
- Crown Land

### Resource Lands (Land Use Designation)

- Agricultural Resource Lands
- Extractive Resource Lands (Mineral Aggregate Reserve)
- Extractive Resource Lands (Licensed Pit & Quarry)

### Transportation and Infrastructure

- Provincial Highway
- County Road
- Township Road
- Road Allowance
- Rail Line
- Oil or Gas Pipeline
- Electric Power Transmission Line
- Township Boundary
- Water Ways
- Airport
- Communal Well
- Sewage Lagoon
- Hospital

### MOECC Identified Closed Waste Site (Approximate Location):

- Closed Waste Site

1:50,000



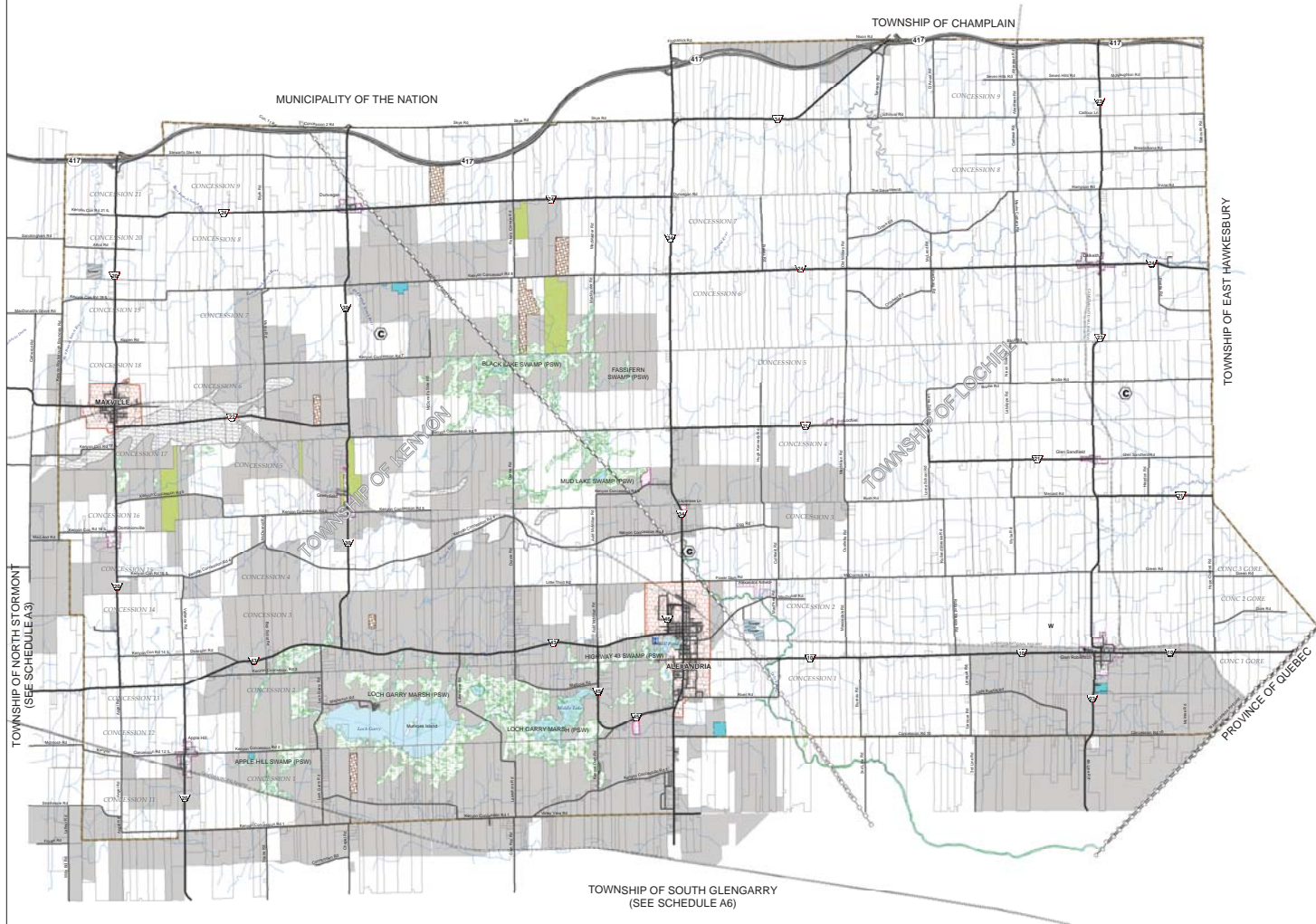
Produced by the United Counties of Stormont,  
Dundas and Glengarry, Transportation and  
Planning Services with Data supplied under  
License to Members of the Ontario Geospatial  
Data Exchange  
© November 17, 2015

As updated by MMA, December 21, 2017





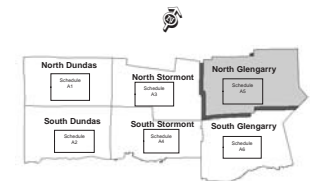
UNITED COUNTIES OF PRESCOTT AND RUSSELL



## LAND USE SCHEDULE A5

Township of  
North Glengarry

KEY PLAN



LEGEND

### Boundaries (Land Use Designation)

- Urban Settlement Area
- Rural Settlement Area
- Urban Service Limit

### Settlement Areas (Land Use Designation)

- Residential District
- Commercial District
- Employment District
- Rural District
- Airport District
- Salvage Yard District
- Waste Disposal District

### Natural Heritage Features & Areas (Land Use Designation)

- Provincially Significant Wetland (PSW)
- Crown Land

### Resource Lands (Land Use Designation)

- Agricultural Resource Lands
- Extractive Resource Lands (Mineral Aggregate Reserve)
- Extractive Resource Lands (Licensed Pit & Quarry)

### Transportation and Infrastructure

- Provincial Highway
- County Road
- Township Road
- Road Allowance
- Rail Line
- Oil or Gas Pipeline
- Electric Power Transmission Line
- Township Boundary
- Water Ways
- Airport
- Communal Well
- Sewage Lagoon
- Hospital

### MOECC Identified Closed Waste Site (Approximate Location):

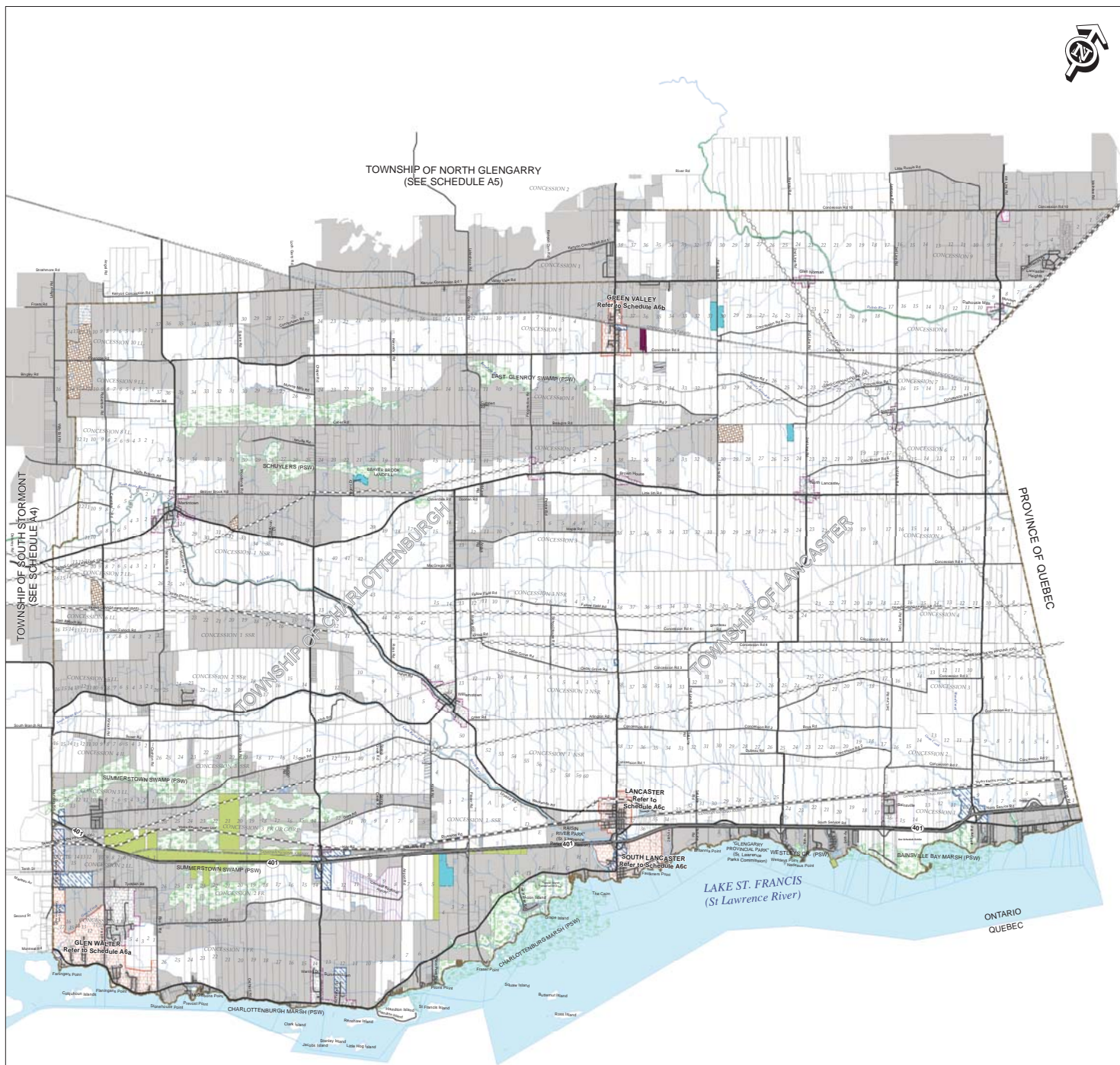
- Closed Waste Site

1:55,000



Produced by the United Counties of Stormont,  
Dundas and Glengarry, Transportation and  
Planning Services with Data supplied under  
Licence by Members of the Ontario Geospatial  
Data Exchange  
© November 17, 2015

As updated by MMA, December 21, 2017



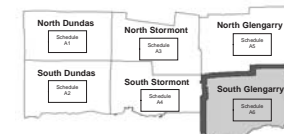
As updated by MMA, December 21, 2017



## LAND USE SCHEDULE A6

### Township of South Glengarry

KEY PLAN



LEGEND

#### Boundaries (Land Use Designation)

- Urban Settlement Area
- Rural Settlement Area
- Urban Service Limit

#### Settlement Areas (Land Use Designation)

- Residential District
- Commercial District
- Employment District
- Rural District
- Airport District
- Salvage Yard District
- Waste Disposal District
- Special Land Use District (See Table 9.1.5 of the OP Text)

#### Natural Heritage Features & Areas (Land Use Designation)

- Provincially Significant Wetland (PSW)
- Crown Land

#### Resource Lands (Land Use Designation)

- Agricultural Resource Lands
- Extractive Resource Lands (Mineral Aggregate Reserve)
- Extractive Resource Lands (Licensed Pit & Quarry)

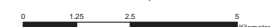
#### Transportation and Infrastructure

- Provincial Highway
- County Road
- Township Road
- Road Allowance
- Rail Line
- Oil or Gas Pipeline
- Electric Power Transmission Line
- Township Boundary
- Water Ways
- Airport
- Communal Well
- Sewage Lagoon
- Hospital

#### MOECC Identified Closed Waste Site (Approximate Location):

- Closed Waste Site

1:50,000



Produced by the United Counties of Stormont, Dundas and Glengarry, Transportation and Planning Services with Data supplied under Licence by Members of the Ontario Geospatial Data Exchange  
© November 17, 2015